

Virtual Factory® Specifications

Data Connections

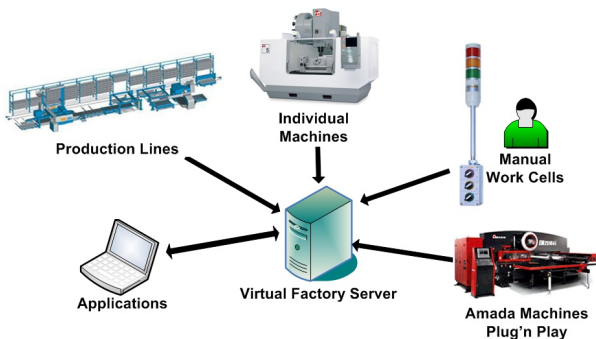
• OPC Standard connection to over 500 PLC's, Touch Panels, Controls, and other devices. Device connections with our OPC Client includes devices from the following companies and many more:

- ABB
- GE Fanuc
- Siemens
- Mitsubishi
- Modicon
- Wonderware
- Honeywell
- DataForth
- Rockwell
- Allan-Bradley
- Omron
- Advantech
- Beckhoff
- Yokogawa
- National Instruments
- Motorola
- Toshiba
- Emerson

- Direct interface to Advantech Adam 6050 device for capturing signals, such as Andon stack light switch boxes
- Amada Machine Controls (AMNC) Direct Plug'n Play
- Ethernet-based Web Cameras
- Ethernet-based PC applications (using Application Programming Interface and SOAP interface)

Protocols

- Modbus
- Ethernet/IP
- SNMP
- DeviceNet
- ControlNet
- Profibus
- Fieldbus

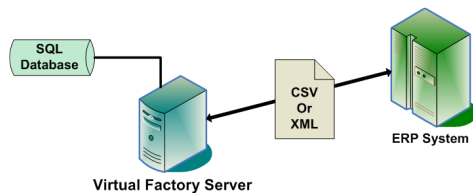


Database Logging

• MySQL 5.0 relational database; other SQL databases as required

ERP/MRP Interface

• XML or CSV files to specification



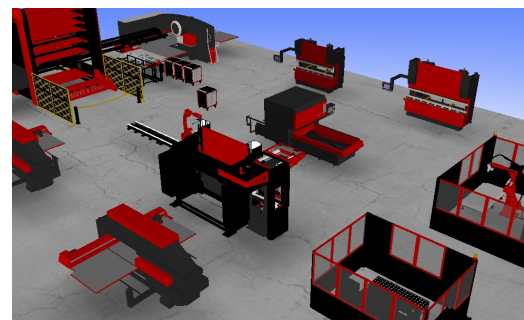
Andon Status Panels

- Large Screen Plasma or LCD displays with automatic scrolling capability (includes no-scrolling area when needed)
- Internet Explorer browser-based with drill down links to reports
- Customizable cell layouts, cell content and cell characteristics (font, color, blinking)
- Formula-based cell content. For example, If Machine A is Down, then this cell blinks Red and the cell message is "Machine A Down." Multiple formulas for the same cell are prioritized; first TRUE value "wins."

Name	Planned	Actual	Eff%	Def%
ALPHA Line1	318	241	76	4
ALPHA Line2	523	397	76	7
BETA Line1 24:20	512	143	28	5
GAMMA Line1	369	314	85	11
GAMMA Line2	271	213	79	9
DELTA Line1	0	0	100	0
DELTA Line2	0	0	100	0
DELTA Line3	0	0	100	0
MACHINING Line1	303	198	65	7
MACHINING Line2	540	342	63	15
MACHINING Line3	540	389	72	13
FINE MACHINING Line1	226	203	90	0
FINE MACHINING Line2	197	190	96	0
T MACHINING Line1	89	60	67	0
T MACHINING Line2	89	80	90	0
T MACHINING Line3	85	73	86	0
TSUB MACHINING Line1 19:40	107	85	79	0
TSUB MACHINING Line2	61	57	93	0
TSUB MACHINING Line3	187	185	99	0

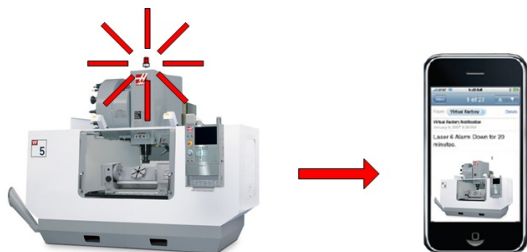
3D Factory Layout Status Panels

- Rotate, Pan, and Zoom to navigate through factory
- Machines are selectable to drill down for detailed reports
- Machines are color-coded to represent machine status
- Import Machine Models from Google Sketchup
- Import Machine Models from CAD systems
- Machine Animation is optional



Event Definition and Subscription

- Customizable Event Definitions such as "If Machine B is down for 5 minutes"
- Users can subscribe to any event based upon calendar and hours of the day
- Users can be notified of event via cell phone or pager text message or email (may include video leading up to the event as an attachment)



Applications Programming Interface

- Library of functions to send and receive data between third party application and Virtual Factory server
- C++ • C# • Visual Basic • Java
- SOAP interface



RealTRAK®

- Optional RFID support module, which can plug into Virtual Factory®
- Tracks Passive RFID tags passing through "gate"
- Tracks WIFI devices locations
- Tracks Active RFID tags locations
- Vendor Neutral (Alien, Aeroscout, many others)
- Event notification based upon tracked asset locations
- Customizable business logic solutions

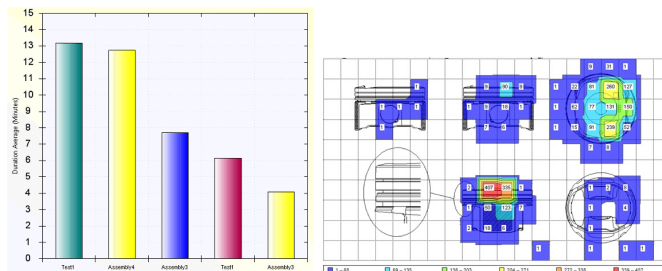
Portable Device Andons

- iPhone-based with manual scrolling
- 3D Factory with color-coded machines to show status



Data Analysis and Reporting

- Analysis and Web-based reporting across a variety of dimensions, such as calendar days, shifts, production lines, individual work cells. Drill down from one level of report to lower levels for more detail.
- Pareto of Issues Reports, Work Cell Reports, State Reports across all cells
- Response Time Reports, Resolution Time Reports, Efficiency Reports, Scrap Count and Reason Reports.
- Export report data to CSV files for Excel or other third-party graphics packages



Virtual Factory Server Host Computer

- One of the following: Microsoft® Windows XP Professional, Microsoft Vista™ Vista Business or Ultimate, Microsoft Windows Server 2003, or Microsoft Windows Server 2008
- Microsoft® IIS and Microsoft® .NET 2.0